

Quick User Guide

DB5000

RDS/RBDS Radio Data Decoder with
TCP/IP, COM & USB Connectivity

→ **BEFORE YOU USE THIS PRODUCT** ←

In order to be able to enjoy all the benefits of owning your new DEVA product, please verify first that the latest software and firmware release were installed.

Visit www.devabroadcast.com/downloads for the most recent software and firmware downloads, prior the installation.

This Quick user guide will make the installation of DB5000 - RDS/RBDS Radio Data Decoder with TCP/IP, COM & USB Connectivity quick and easy. Following these steps will simplify the process and may save you extra time and effort. **For more information about the Safety precautions and the Operating environment recommendations please refer to the User Manual.**

STEP 1

Connection

1. Install the unit on its operation place;
2. Connect the unit via grounding cable to the ground network of the room space where the unit is installed;
3. Connect the device to the power supply network using the provided power cable;
4. Connect the antenna cable to the RF antenna input connector located on the rear panel of the device;
5. Connect DB5000 to the TCP/IP network using a direct network cable.

STEP 2

RDS/MPX Input Configuration

In order for the RDS/RBDS to be measured accurately the **Input Level** should be manually set to 75 kHz. Both the trim control labeled "**Input Level**" and the **LED Indicator** are placed on the rear panel of the device.

Feed the device with mono signal corresponding to 75kHz modulation. Using a screwdriver start setting the "**Input Level**" until the LED Indicator "**Level OK**" indicates it. The light has to be constantly switched on while the signal needed for the calibration is fed.

STEP 3

Connection Priority

DB5000 supports TCP/IP, COM & USB Connectivity. The "Device Manager Software" maintains each of the connections independently. The device prevents simultaneous connections. The priority of each connection is controlled by the device, not from the software. The connection priority in ascending order is: TCP/IP, COM and USB (The USB connection is with the highest priority).

For example, if a connection with lower priority is used any other connection with higher priority implicates the lower priority connection will be disconnected. Once disconnected, the reconnecting must be managed manually.

STEP 4

Device Manager Software Installation

In order to avoid hardware conflicts and connection problems, install the software before connecting the device to the computer.

1. Use the Installation file which can be found on the supplied CD or downloaded from www.devabroadcast.com/downloads;
2. The software has an "**AutoRun**" utility and will automatically begin the installation;
3. If the **Setup Wizard** does not start automatically follow these steps:
 - Click on "**Start**", then go to "**My Computer**", and finally double-click on the "**CD Drive**";
 - Find "**Software**" folder, double click on "**DB5000_Device_Manager.exe**" to launch the Wizard.
4. Accept the default recommendations and click "**Next>**" at the end of each step;
5. When asked to place an icon on the computer Desktop, click on the check the box;
6. Finally, select NOT to launch the program;
7. Close the software installation utility.

STEP 5

USB Port Installation

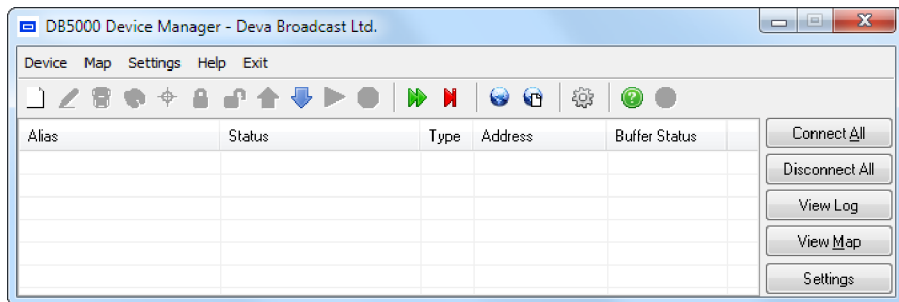
Follow these steps for the installation of the USB driver:

1. The USB driver should be added into the folder containing DB5000 program path. If you have not made any changes during the installation process the driver must be located at: **My Computer / Local Disk (C:) / Program Files / DB5000 Device Manager / Drivers**;
2. Connect DB5000 to the AC, then connect the front/rear-panel USB port to the computer. Instantly a "**New Hardware**" notification will appear. Start the **Wizard**, select "**No, not this time**" and then **Next>**. Select "**Install from a list or specific location (Advanced)**" and then **Next>**;
3. Verify the location of the driver and click **Next>**;
4. The "**Hardware Wizard**" will inform you when the installation is complete.

STEP 6**Device Manager Software**

After the installation process is completed, a shortcut to the software will appear on the desktop of your PC.

Double click on the shortcut will open the main application window. Most of the functions are disabled, because no devices are listed in the Device Manager currently. Otherwise the control window looks like this:

**STEP 7****Defining New Device**

Follow one of these steps:

1. Press the **"New Device Button"** ;
2. Select **"New Device"** from the **Device Menu**.

A dialog box requiring obligatory information about the device will appear:

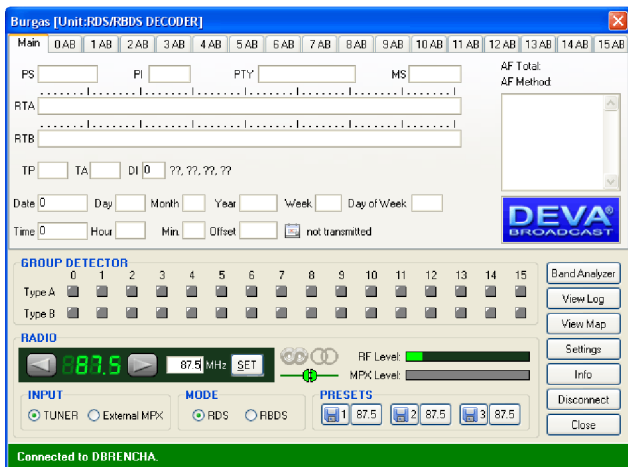
- **Alias** is user-defined name for each device and makes it unique and easy for identification;
- **Password** protects from unauthorized access. Default password: *DEVA*. The password should be exactly 4 characters long;
- **Device Type** is to defines what kind of connection will be utilized for the device.

Fill in the needed information and press **"OK"**.

STEP 8**View New Device**

Select a device from the **"Device List"** and press **"View Device Button"**.

The device Control Window will appear. Press **"Connect"** to enter DB5000 **Main menu**.



Defining of New User Map:

Click "**View Map**" and choose one of the following options:

- Press "**New Map**" button;
- Select "**New Map**" from the "**Map Menu**";

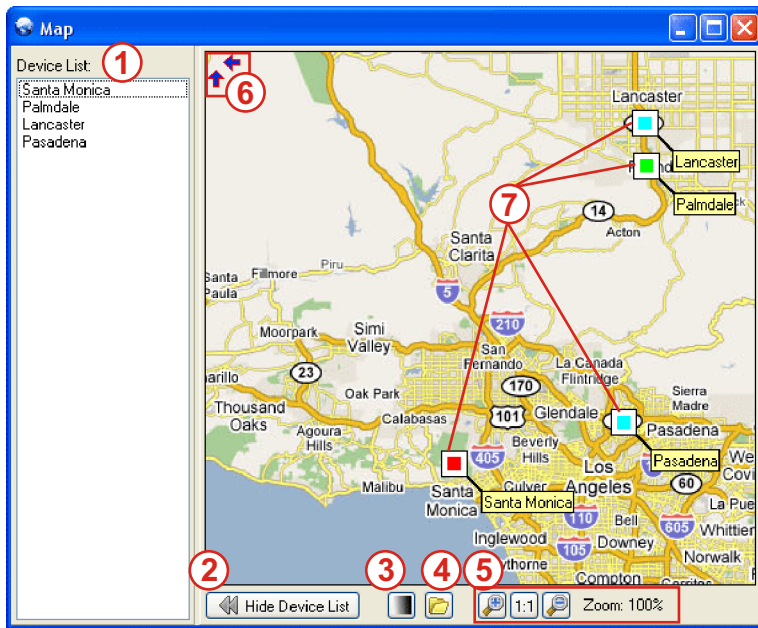
A dialog window acquiring a map picture will appear. JPEG (.jpg, .jpeg) or Bitmap (.bmp) files can be uploaded.

Device Location

Select a device from the "**Device List**" through one of the following options:

1. Press "**Locate on Map Button**";
2. Select "**Locate on Map**" from the "**Device Menu**";
3. Press **Ctrl+M**.

The selected device should be positioned in the center of the Map. Manually set the exact position of the device.



This is an additional tool for fast evaluation of DB5000 condition. Each device is visually represented on the User Defined Picture (Map).

1. **Device List** - encloses all registered devices;
2. **Hide/Show Device List button** - Hides/Shows Device List, accordingly Map is being expanded/colapsed;
3. **Color/Grayscale Mode** - switches between Color and Gray Map;
4. **Load New Map** - loads a new User Map from JPEG or BMP file;
5. **Zoom controls**;
6. **Overflow indicator** - indicates if left or/and top parts of the Map are hidden;
7. **Devices**.

Please refer to the User manual for detailed information on how to configure and explore your device.