

SOFTWARE UPDATE  
INSTRUCTION MANUAL

# Device Manager

Compatible with:  
DB4004, DB7000, Radio Explorer II, DB44



Publish Date: 24-Nov-2014

# DEVA Device Manager Software Update

This document is intended to guide you through the update process of the DEVA Device Manager Software. Following the steps listed below will ensure that the used devices will be retained in the computer's memory and used later on. Otherwise the currently entered information will be lost.

**PLEASE BEAR IN MIND** that a master password will be required for some of the steps listed below.

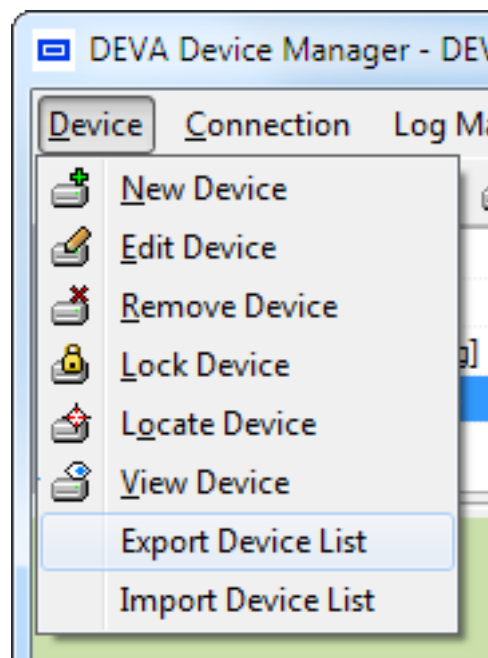
## 1. DONWLOAD LATEST VERSION

The latest version of DEVA Device Manager Software can be found our website - <http://www.devabroadcast.com/downloads>

## 2. EXPORT DEVICE LIST

Prior to the installation of the new version the Device List should be exported.

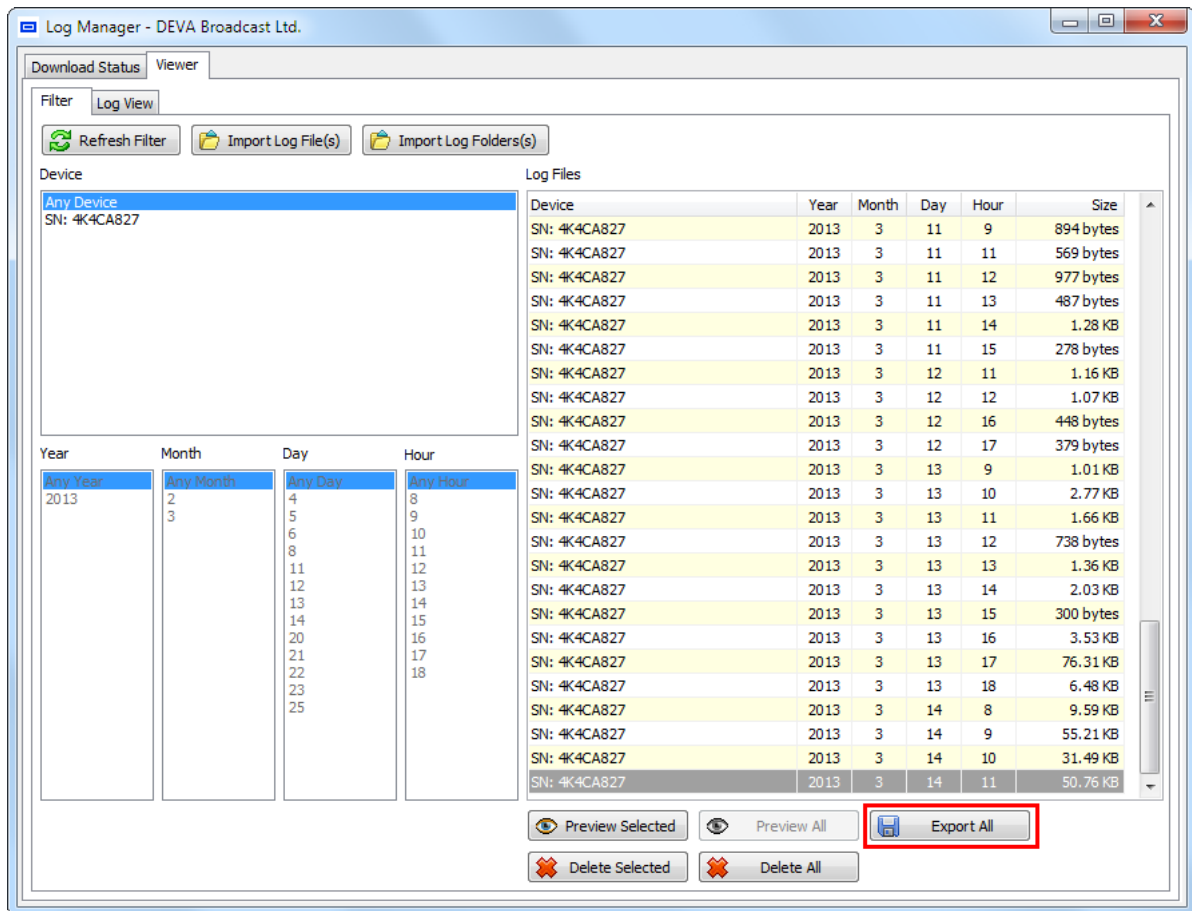
- Click on “Device” menu and select “Export Device List”;



- Enter your Master password and press OK;
- Save the file.

### 3. EXPORT ALL LOG FILES

The menu path is: Log Manager > Viewer > Export all button.



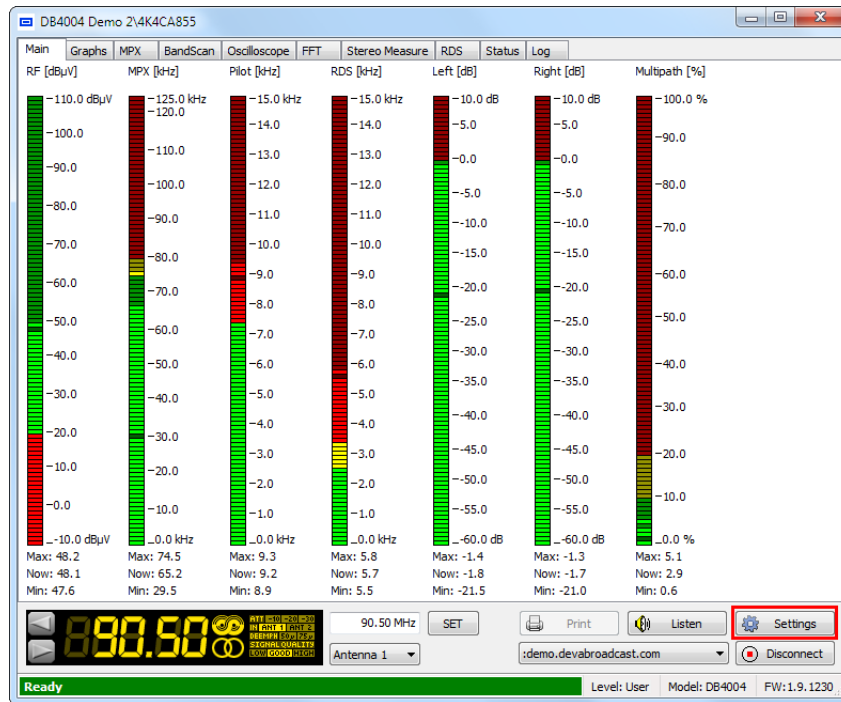
### 4. MAIN APPLICATION SETTINGS

If you have made any changes to the software's main application settings, please write them down. As upon update, all custom settings will be lost. The main settings can be found in the relevant menu placed in the menu bar.

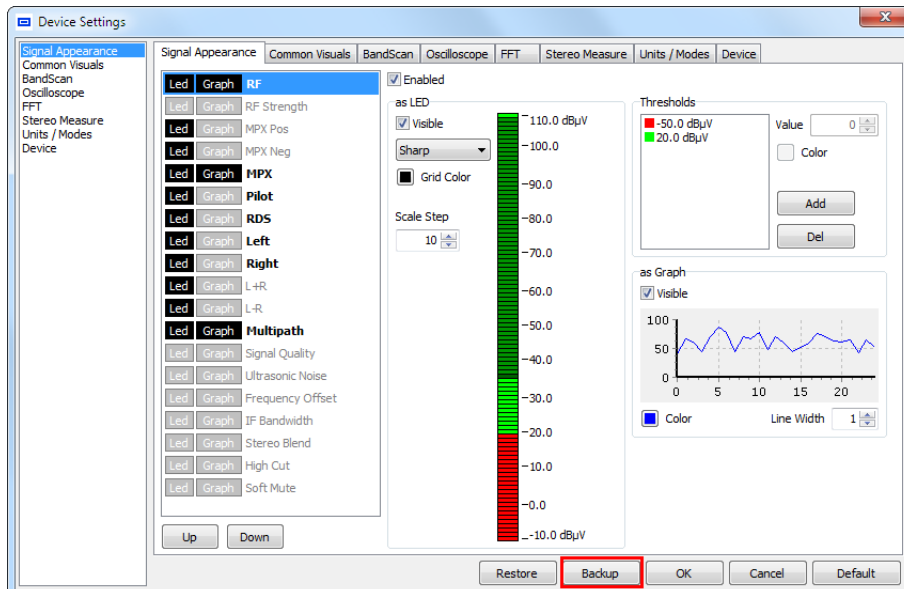
## 5. BACKUP INDIVIDUAL DEVICES

In order for the custom applied Software settings to the Device to be preserved (if considered needed) - signal appearance and common visuals for example, backup of the devices included in the Device list should be made. A master password will be required. The menu path is (as depicted below) Device > Settings > Backup.

- a) Device : DB4004 for example
- b) Settings :



c) Backup :



## 6. UNINSTALL THE PREVIOUS VERSION

---

Uninstall the previous version of the DEVA Device Manager.

## 7. INSTALL LATEST VERSION

---

Following the simplified process, install the latest version of the Software. If you are experiencing any problems, please refer to DEVA Device Manager Software complete user manual, section Loading and Running the Software.

## 8. POSSIBLE RESTART

---

After the installation process is completed, a shortcut to DEVA Device Manager will appear on the desktop of your PC. Double click on the icon to start the program.

Only if any general changes in the new version of the DEVA Device Manager's code have been made, a notification message informing you that the currently available data is not compatible with the current version, and will be archived will appear. If so, click 'OK' and start the software again.

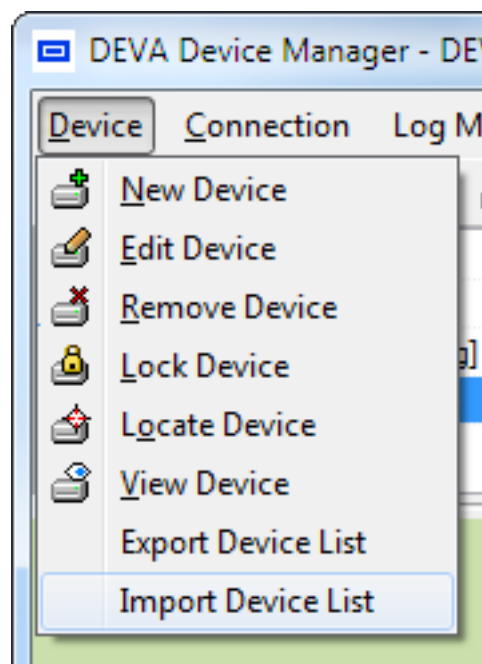
Having the latest LOG files downloaded, and the device list exported will prevent loss of important data.

If due to any reason you have not performed any of the above cited procedures, please contact us at support@devabroadcast.com

## 9. IMPORT DEVICE LIST

---

- Click on "Device" menu and select "Import Device List";

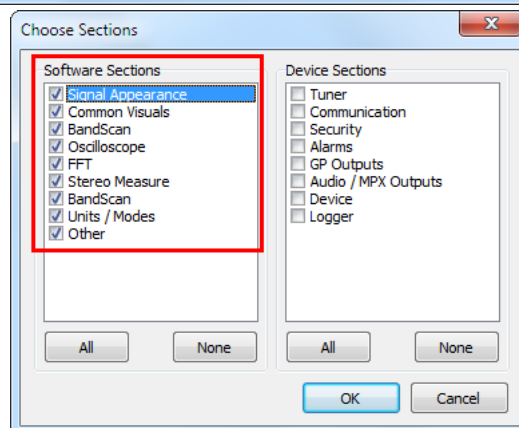
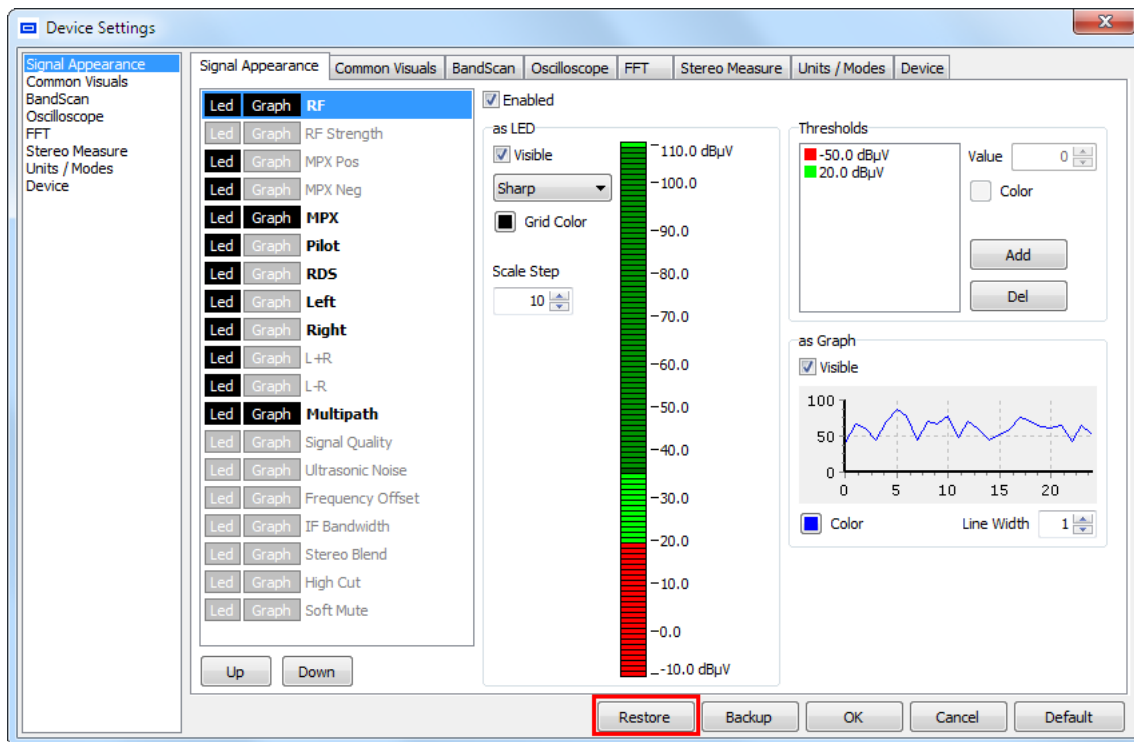


- Select the desired file and press OK;
- The information will be transferred and displayed on DEVA Device Manager main window.

## 10. RESTORE INDIVIDUAL DEVICES

If a backup device procedure has been performed, you can return the previously applied settings to the devices, following the procedure described in step 4. This time using the “Restore” button, instead of “Backup”.

**PLEASE HAVE IN MIND** that the custom settings applied to the software should be restored - signal appearance, common visuals, units/modes, etc.



## 11. APPLY MAIN APPLICATION SETTINGS

If needed, change the DEVA Device Manager Main Application Settings. For further information, please refer to the DEVA Device Manager Software complete user manual, section Main Application Settings.

*If you are experiencing any difficulties, or due to any reason the update process fails, please contact us at support@devabroadcast.com.*