

Quick User Guide

DB3000

FM Radio Modulation Analyzer

→ **BEFORE YOU USE THIS PRODUCT** ←

In order to be able to enjoy all the benefits of owning your new DEVA product, please verify first that the latest software and firmware release were installed.

Visit www.devabroadcast.com/downloads for the most recent software and firmware downloads, prior the installation.

This Quick user guide will make the installation of DB3000 FM Radio Modulation Analyzer quick and easy. Applying these principles, you can simplify the process and save yourself extra time and effort. **For more information about the Safety precautions and the Operating environment recommendations please refer to the User Manual.**

STEP 1 Connection

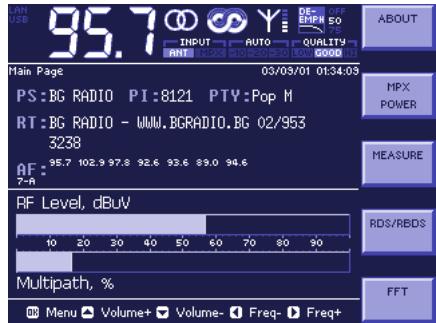
Before connecting DB3000 to the AC Power, make sure that the internal Power Switch and the Fuse rating are in accordance with the mains supply at your location. The device is set to 220 VAC and 1 Amp Fuse by default.

The items needed for the configuration are a pair of headphones and connection to an outdoor antenna.

NOTE: For more information on how to change the AC Input Voltage please refer to the complete **User Manual, page 11.**

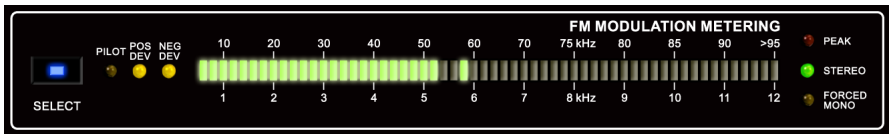
STEP 2 Configuration

1. Plug the headphones in the front panel jack;
2. Using the front panel Navigational Buttons, press **"OK"** to select the **MAIN PAGE**;
3. Use the **"LEFT"** or **"RIGHT"** Navigational Buttons to find a strong local signal that could be clearly heard through the phones.



Upon switching on DB3000 the Positive and Negative deviation will be selected automatically and both the POS DEV and NEG DEV LED indicators will be turned on.

It is strongly recommended that the FM Modulation Metering display to be kept in default mode. This will guarantee you an exact measurement of the station's carrier deviation.



STEP 3 Connection Settings

DB3000 supports three types of communication interfaces – network (LAN) , RS232 (UART) and USB port settings. We recommend you to enable both USB and LAN connections.

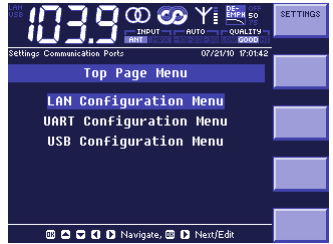
The communication ports should be set through the Front panel navigational menu.

NOTE: *Navigational Buttons* - **UP** and **DOWN** are used to select the desired sub-menu. **RIGHT** and **OK** are used to edit/enter the selected Menu. **LEFT** will forward you to the previous menu.

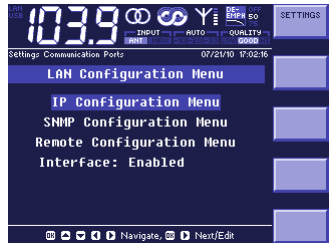


Settings

1. Using a LAN Cable connect the device to any Windows based computer;
2. Use the front panel navigational buttons to enter the device main menu. Find *SETTINGS* and press **OK** ;
3. Using the **UP** button select *COMM PORTS* and press **OK** to enter it. A sub-menu containing a list of all communication ports will appear;
4. Use the navigational buttons to select the desired port and press **OK** or **RIGHT** to enter the menu.



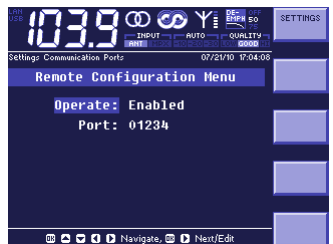
Settings/Com ports



LAN Configuration Menu



IP Configuration Menu



Remote Configuration Menu



USB Configuration Menu

STEP 3.1 LAN Configuration

1. Use the navigational buttons to select the *LAN Configuration Menu* and press **OK** or **RIGHT** to enter it ;
2. Select *Interface* and using the **UP** and **DOWN** buttons enable the Network Controller;
3. Set the Network address through one of the following options:
 - 3.1 **Automatically via DHCP client:**
Using the navigational buttons enter the *IP Configuration Menu* and enable the DHCP. This will activate te built-in DHCP Client. The procedure takes about 1-2 seconds and upon completion all values will be displayed. Press **OK** to save the applied changes;
 - 3.2 **Manually (static IP):**
For manual adjustment of the IP, MASK, GATEWAY and DNS address disable the DHCP. Then using the navigational buttons apply the new values and press **OK** to save the changes.
4. Using the navigational buttons enter the *Remote Configuration Menu* and enable this function.

We recommend you to write down the IP address and the Port of the device. This information will be used later on.

NOTE: For further information about the LAN configuration and the Network address refer to the complete User Manual.

STEP 3.2 USB Configuration

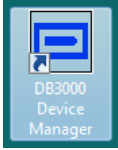
1. Use the navigational buttons to select *USB Configuration Menu* and press **OK** or **RIGHT** to enter it;
2. Select *Interface* and enable the USB Controller.

STEP 4 Device Manager Software Installation

1. Insert the supplied **CD** or download the installation file from www.devabroadcast.com/downloads;
2. The software has an **"AutoRun"** utility and will automatically begin the installation;
3. If the **Setup Wizard** does not start automatically follow these steps:
 - Click on **"Start"**, then go to **"My Computer"**, and finally double-click on the **"CD Drive"**;
 - Find **"Software"** folder, double click on **"DB3000_Device_Manager.exe"** to launch the Wizard;
4. Accept the default recommendations and click **"Next>"** in the end of each step;
5. When asked to place an icon on the computer Desktop, click on the check box;
6. Finally, select **NOT** to launch the program;
7. Close the software installation utility.

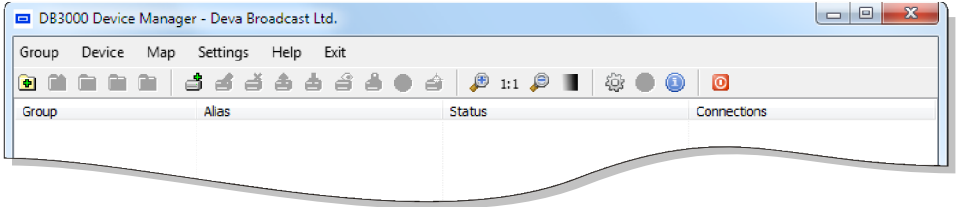
STEP 5

Device Manager Software



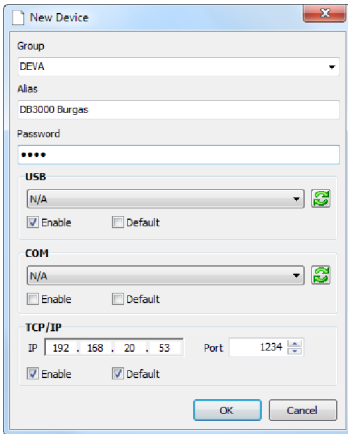
After the installation process is completed, a shortcut to the device will appear on the desktop of your PC.

Double click on the shortcut to enter the Software. This will open the main application window. Most of the functions will be disabled, because there will be no devices listed in the Device Manager. Pricipally the control window looks like this:



STEP 6

Defining New Device



Press **"New Device Button"** or Select **"New Device"** from the **Device Menu**.

A dialog box requiring obligatory information about the device will appear. Fill in the information and press **"OK"**.

- **Group** is used for easier recognition of the device location (site, town, country, etc.);
- **Alias** is user-defined name for each device and makes it unique and easy for identification;
- **Password** protects from unauthorized access. Default password: 1234;
- Enable the preferred communication interfaces. We recommend you to enable both USB and TCP/IP interfaces. Enter the device IP address and Port.

After the defining process is completed, the device will appear in the Device list and on the Map.

Double click on the name of the device **(1)** will open the main application window. Press the **"Connect"** button to enable all functions.

Please refer to the User manual for detailed information on how to configure and explore your device.

