

Quick User Guide

Band Scanner 2

FM & MOD Analyzer, RDS Decoder,
built-in GPS receiver for signal
coverage survey

→ **BEFORE YOU USE THIS PRODUCT** ←

In order to be able to enjoy all the benefits of owning your new DEVA product, please verify first that the latest software and firmware release were installed.

Visit www.devabroadcast.com/downloads for the most recent software and firmware downloads, prior the installation.

This Quick user guide will make the installation of Band Scanner 2 quick and easy. Following these steps will simplify the process and save you extra time and effort. **For more information about the Safety precautions and the Operating environment recommendations please refer to the User Manual.**

STEP 1

Software Installation

In order to establish communication with Band Scanner 2 you have to install "**Band Scanner 2 Software**". We recommend you to install the software before connecting the device to the computer.

1. Use the Installation file which can be downloaded from www.devabroadcast.com/downloads
2. Find "**Band Scanner 2**" folder, double click on the installation file to launch the *Wizard*;
3. Accept the default recommendations and click "**Next>**" in the end of each step;
4. When asked to place an icon on the computer's *Desktop*, click on the check boxes;
5. Finally, select NOT to launch the program;
6. Close the software installation utility;
7. A shortcut to the Software will appear on the desktop of your computer.

STEP 2

USB Port Installation

Once the software is installed on the computer, a special USB port driver must also be installed in order for the Band Scanner 2 to be accessible through the front-panel USB port.

Unless something has gone wrong during the installation process, the USB port drivers should be installed automatically on your computer.

NOTE: If the USB driver is not installed already on your computer or a problem has occurred, please, refer to the complete **User Manual**.

STEP 3

FM & GPS Antenna Installation

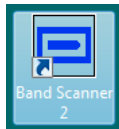
1. Connect the supplied FM and GPS Antennas to the BNC and SMA connectors, placed on the rear panel of the device;
2. Select a suitable location for installation of the GPS Antenna that would allow routing of the antenna cable to the Band Scanner 2 and also would provide a clear view of the sky for a good satellite reception;
3. Using the supplied USB cable, connect Band Scanner 2 to a PC/laptop;

NOTE: Make sure to route the cable in such manner so as to prevent pinching of the cable by doors, windows or trunk lids when they are opened or closed.

NOTE: The maximum input RF signal to the FM Antenna Input is 100 dB μ V. Do not connect the Band Scanner 2 directly to any FM Transmitter's MONITOR Output - this would damage it irrevocably.

STEP 4

Band Scanner 2 Software Usage



After connecting the Band Scanner 2 to a USB port of any Windows based PC, where the software is already installed, the product is ready to be used and does not require any additional adjustments or settings. The software will restore automatically the unit to the initial data.

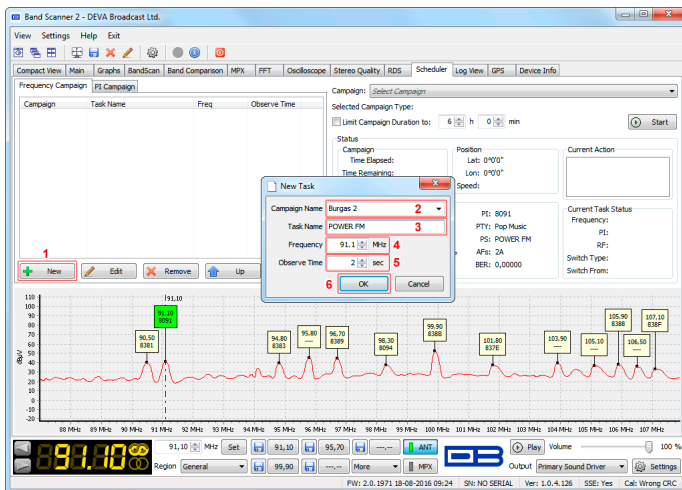
Configure the desired operating mode – Frequency Campaign, PI Campaign. (For more information refer to **Step 5** and **Step 6**)

STEP 5

How to set-up a Frequency campaign

The campaign set-up process is quite simplified and explained in details below. To set-up a campaign go to section **Scheduler > Frequency Campaign**:

- (1) Press [+New] to create a new campaign. A new task window will appear;
- (2) Specify Campaign Name - this will be used as a name for the entire campaign;
- (3) Specify Task Name - name of the radio for example;
- (4) Frequency - specify the frequency to be monitored;
- (5) Observe Time - set the desired observation time;
- (6) Press [OK] to save the changes.
- (7) The same procedure should be completed for each of the frequencies that are to be monitored in this campaign mode.



STEP 6

How to set-up a PI Campaign

The campaign set-up process is quite simplified and explained in details below. To set-up a campaign go to section **Scheduler > PI Campaign**:

- (1) Press [+New] to create a new campaign. A new task window will appear;
- (2) Specify Campaign Name - this will be used as a name for the entire campaign;
- (3) Specify Task Name - name of the radio for example;
- (4) Specify PI or CALL sign of the channel to be monitored;
- (5) Observe Time - set the desired observation time;
- (6) Press [OK] to save the changes.
- (7) The same procedure should be completed for each of the frequencies that are to be monitored in this campaign mode.

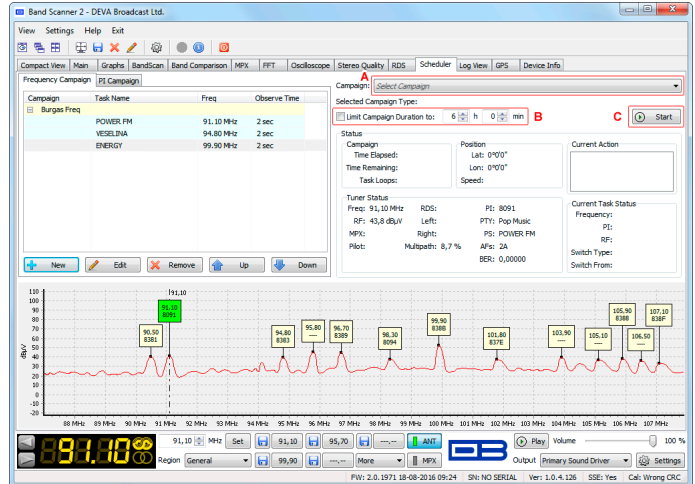


STEP 7

How to start and stop a campaign

Once a Frequency Campaign or a PI Campaign list has been made, the campaign should be started by:

1. Select the Campaign to be commenced (A);
2. If needed enable the Limit Campaign Duration and specify duration time (B). Once the duration time expires the campaign will be auto-matically stopped;
3. Press [Start] (C);
4. The campaign will be started only once the Band Scanner 2 has a GPS fix;
5. To stop a campaign, press the [Stop] (C) or wait for the campaign duration time to elapse.

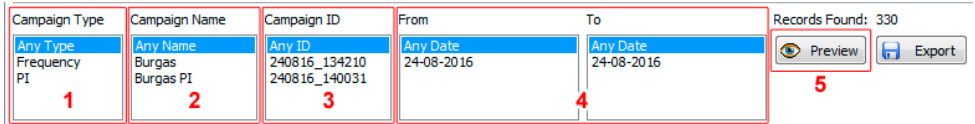


STEP 8

How to visualize a campaign

To visualize the gathered campaign information go to tab **Log View > Campaigns** subsection. The tab has two sections – List View and GPS View. Both are explained in details below.

List View contains a list with all the data from the performed campaigns and the tools to visualize and export them. To visualize a campaign the following steps should be completed:



- (1) Select the Campaign Type;
- (2) Select the Campaign Name;
- (3) Select the Campaign ID;
- (4) Specify time period;
- (5) Press [Preview].

Upon completion of the procedure the **GPS View** section will be automatically opened. To export the files at this stage, press [Export] instead of [Preview].



Please refer to the User manual for detailed information on how to configure and explore your device.